

Year 6 Term 2B

Week 5

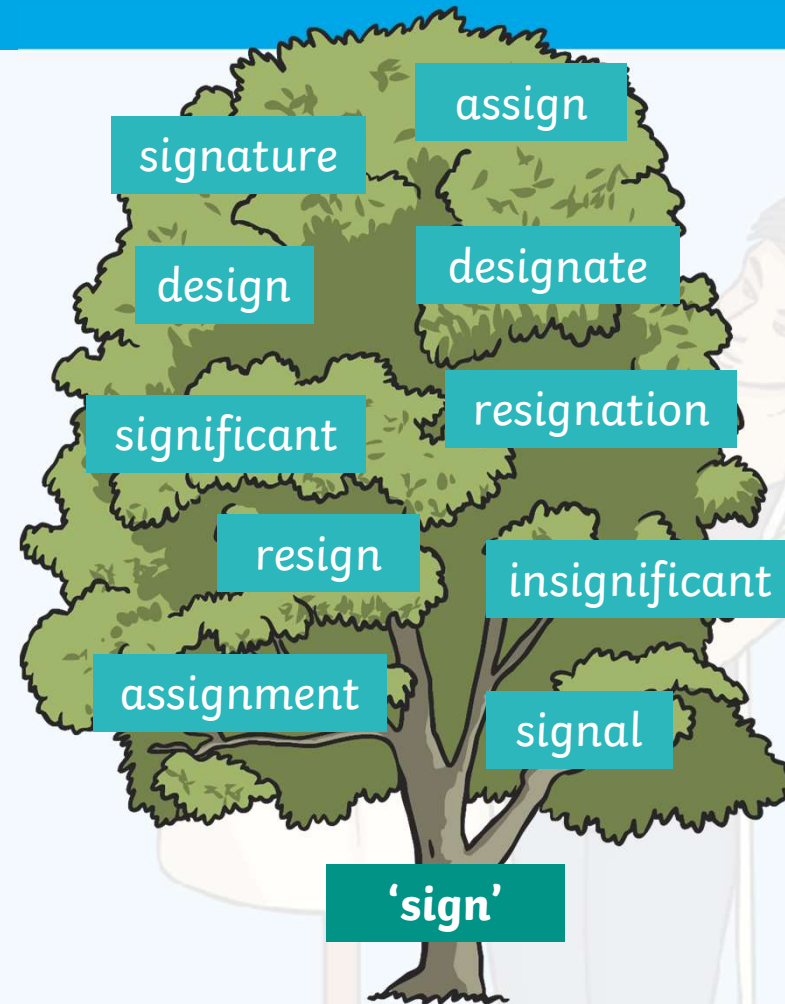
Word Families Based on Common Words



The particular root word that we are going to look at this week is...

'sign'

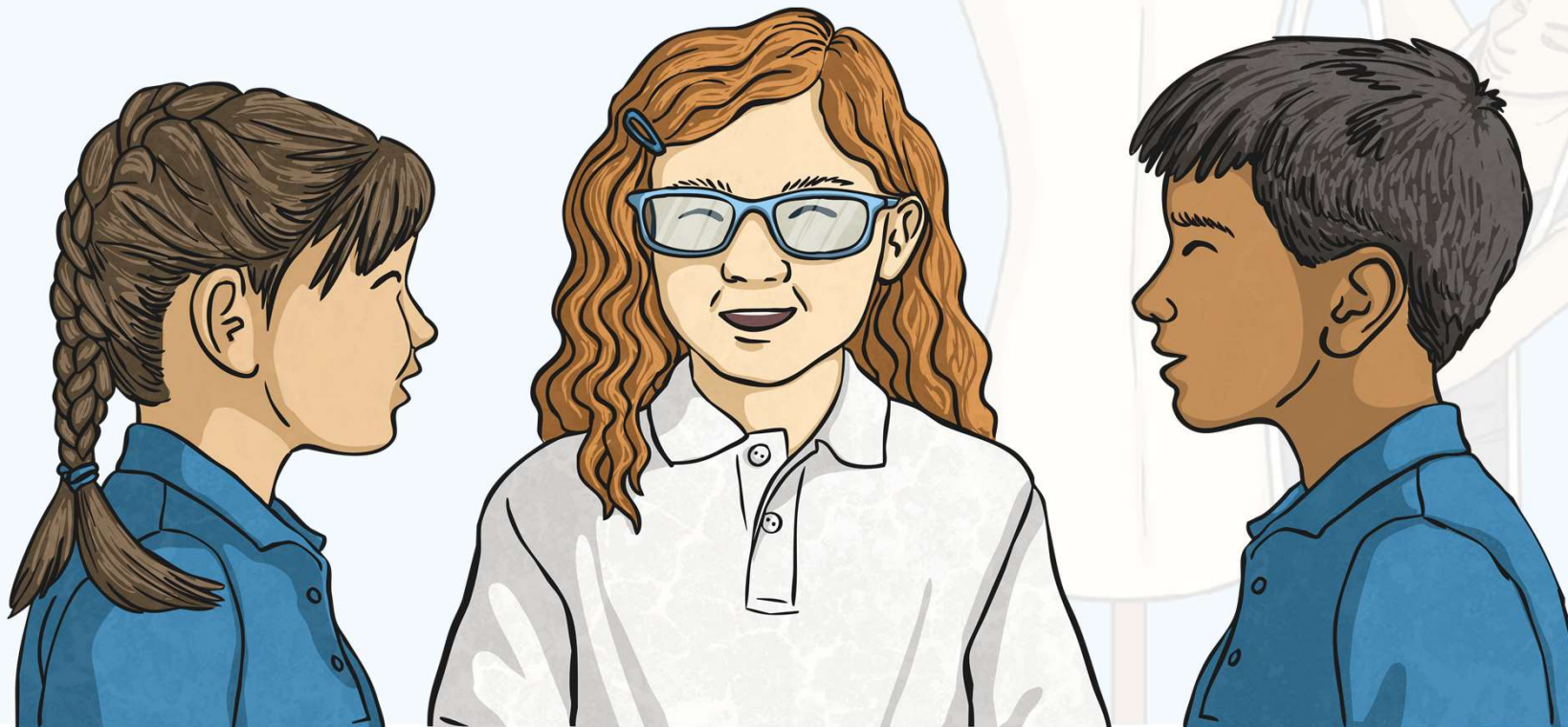
which derives from Latin and is often associated with words that mean **'to mark'** or **'to seal.'**



**Are you a spelling genius when it comes to these 'sign'
word family spellings?**

Work as a team to play, Who Wants to be a Spelling Genius.

Can you win the big points?



Question 1

Which is the correct 'sign' spelling to fit this definition?

To write your name in a distinctive way.



Incorrect Answer



Incorrect Answer



Correct Answer!



Incorrect Answer



Question 2

Which is the correct 'sign' spelling to fit this definition?

To create a plan or drawing of a building,
piece of clothing or object before it is built or made.



Incorrect Answer



Incorrect Answer



Incorrect Answer



Correct Answer!



Question 3

Which is the correct 'sign' spelling to fit this definition?

Greatly important and worthwhile.



Correct Answer!



Incorrect Answer



Incorrect Answer



Incorrect Answer



Question 4

Which is the correct 'sign' spelling to fit this definition?

A piece of work to complete as part of a job or course.



Incorrect Answer



Incorrect Answer



Correct Answer!

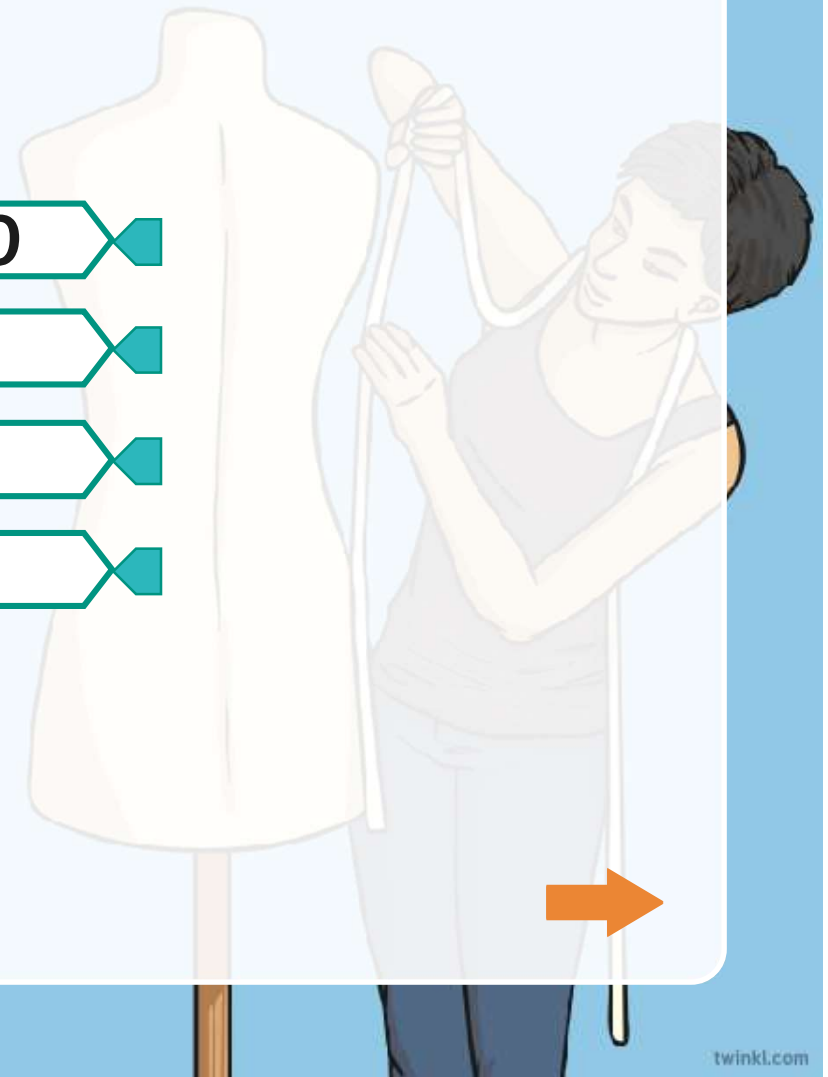


Incorrect Answer



Points

- ▶ 100 000
- ▶ 10 000
- ▶ 1000
- ▶ 100



Here are this week's spellings to practise.

signature

assign

design

designate

significant

resignation

resign

insignificant

assignment

signal



twinkl



twinkl
Quality Standard
Approved